

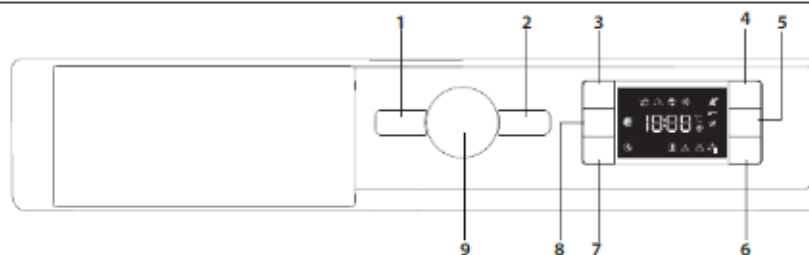
INSTRUCTIONS FOR USE WASHING/DRYING MACHINE WHIRLPOOL BIWDIL861484EU

The following functions are available on your appliance:

- A. Wash only: see page 2
- B. Wash + dry: see page 3
- C. Dry only: see page 4

CONTROL PANEL

- 1. Touche ON/OFF
- 2. Touche MARCHÉ/PAUSE
- 3. Touche TEMPÉRATURE
- 4. Touche ENERGY SAVER
- 5. Touche SÉCHAGE SEUL / VERROU ENFANT
- 6. Touche RÉGLAGES DE SÉCHAGE
- 7. Touche DÉPART DIFFÉRE
- 8. Touche ESSORAGE
- 9. SÉLECTEUR DE PROGRAMME



- INDICATEURS À L'ÉCRAN
- Phase de lavage
 - Indique la phase de lavage du cycle
 - Phase de séchage
 - Energy Saver activé
 - Verrouillage des touches activé
 - Séchage Seul
 - Séchage dans le temps
 - Séchage automatique aux niveaux
 - Départ différé activé
 - Hublot Verrouillé

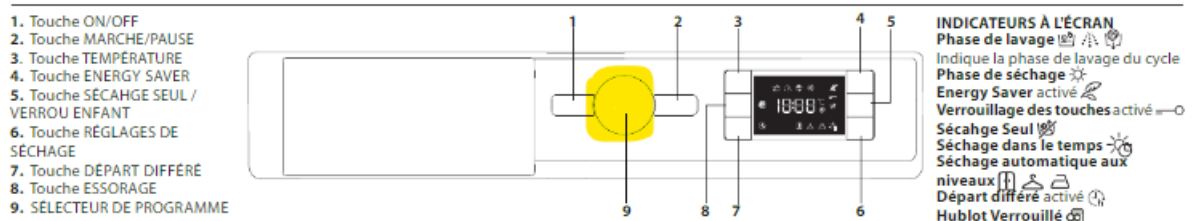
- 1. ON/OFF
 - 2. MARCHÉ/PAUSE = **START/PAUSE**
 - 3. Temperature button
 - 4. ENERGY SAVER
 - 5. SECHAGE SEUL/VERROU ENFANT = **DRY ONLY/CHILD LOCK**
 - 6. REGLAGE DE SECHAGE = **DRYING SETTINGS**
 - 7. DEPART DIFFERE = **DELAYED START**
 - 8. ESSORAGE = **SPIN**
 - 9. SÉLECTEUR DE PROGRAMME = **PROGRAMME SELECTION**
- INDICATEURS A L'ÉCRAN = **Indicators on the screen**

- Phase de lavage = **Wash stage**
- Phase de séchage = **Drying stage**
- Energy saver
- Verrouillage des touches activé = **Key lock on**
- Séchage seul = **Dry only**
- Séchage dans le temps = **Drying time**
- Séchage automatique aux niveaux = **Automatic drying level**
- Départ différé = **Delayed start**
- Hublot verrouillé = **Door locked**

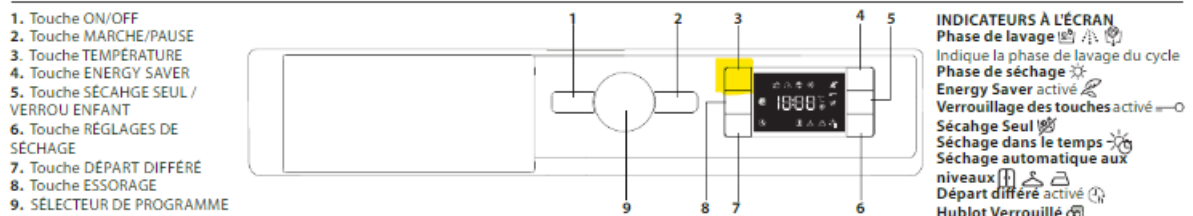
1. To start a programme press the ON/OFF button
2. Put your laundry and the detergent capsule directly into the machine.
3. Close the door of the machine.
4. Select a programme and choose the desired cycle.

A. WASH ONLY

- Using the PROGRAMME SELECTION [SELECTEUR DE PROGRAMME] button (9) choose the type of wash, for example cotton [coton] or mixed fabrics [mixte]



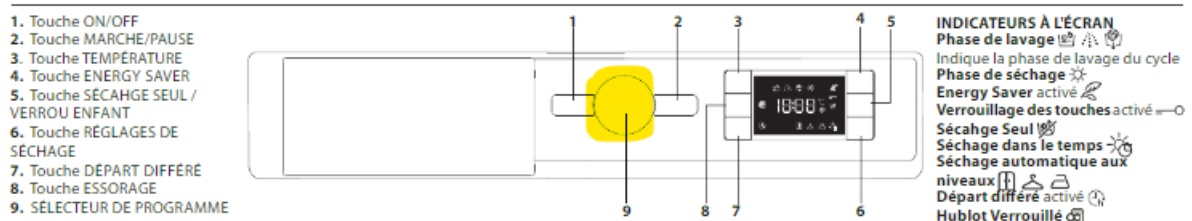
- Select the desired temperature for the wash using the TEMPERATURE button (3)



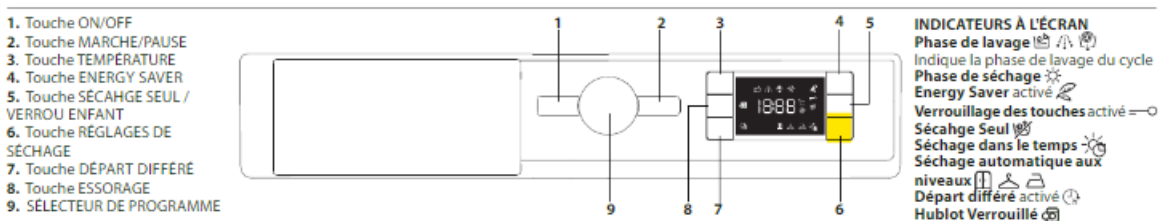
- Press the START/PAUSE [MARCHÉ/PAUSE] button (2). The button starts flashing slowly.
- At the end of the cycle the word 'END' shows on the screen. The door can only be opened once this lights up on the screen. Make sure that the symbol 'Door open' is lit then open the door and remove the laundry.

B. WASH + DRY

- Using the PROGRAMME SELECTION [SELECTEUR DE PROGRAMME] button (9) choose the desired type of wash, for example, cotton [coton] or mixed fabrics [mixte]




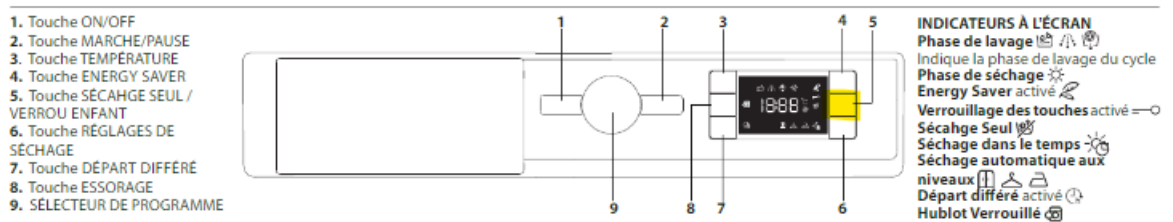
- Press button 6 ☀️ to choose the temperature and drying level




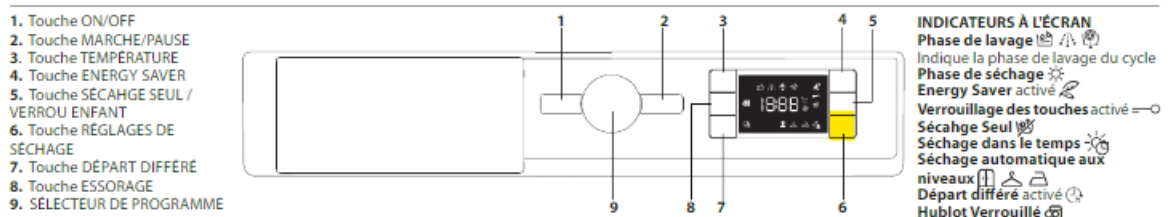
- The following drying levels are available:
 - Ready to store [Prêt à ranger] 🗄️ : the laundry is completely dry and can be put away in the wardrobe without being ironed;
 - Hanger [Sur cintre] 🧥 : the laundry is slightly damp so that it doesn't crease. Clothes should be hung up to finish drying ;
 - Ready to iron [Prêt à repasser] 🧺 : the clothes are left damp enough to facilitate ironing.
- Press START/PAUSE [MARCHÉ/PAUSE] (button 2) which will then start to flash slowly.
- At the end of the cycle the word 'END' shows on the screen. The door can only be opened once the symbol is lit. Make sure that the symbol Door open [porte déverrouillée] is lit then open the door and remove the laundry.



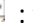
C. DRY ONLY

- To dry only, press button 5  [Séchage seul]



- Press button 6  to select the desired temperature and drying level



- The following drying levels are available:
 - Ready to store [Prêt à ranger]  : the laundry is completely dry and can be put away in the wardrobe without being ironed;
 - Hanger [Sur cintre]  : the laundry is slightly damp so that it doesn't crease. Clothes should be hung up to finish drying ;
 - Ready to iron [Prêt à repasser]  : the clothes are left damp enough to facilitate ironing.
- Press the START/PAUSE [MARCHE/PAUSE] button (2) which will start to flash slowly.
- At the end of the cycle the word 'END' will show on the screen. The door can only be opened once the symbol lights up. Make sure the symbol Door open [porte déverrouillée] is lit then open the door and remove the laundry.